

ACCUTEK Acrylic Polishing Machine



ACCUTEK AC 1300
ACCUTEK AC 1600

ACCUTEK AC 1360
ACCUTEK AC 1660

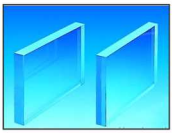


Diamond Edge Polishing System

When using diamond edge polishing, edges on acrylic sheets are moved over sharp, fast-rotating diamonds. Properly done is the result so good that diamond polishing can be compared with cast surfaces. Moreover, the method is relatively inexpensive and can be performed on large batches.

Diamond edge polishing may be used on edges of shelves and signs that have previously been sawn to correct dimensions.

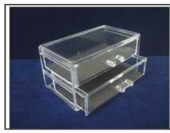
It should be noted that diamond edge polishing is exclusively for straight or sloping sides. Eg. it cannot be used on rounded corners



Acrylic Edge Polishing



Led Light Guide Polishing



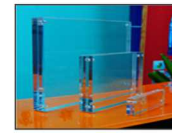
Acrylic Products Polishing



Acrylic Display Rack Polishing



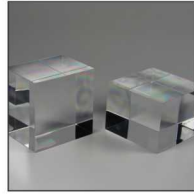
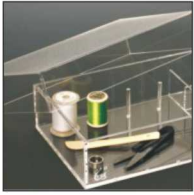
Acrylic Furniture Polishing



Acrylic Crafts Polishing



Acrylic Light Box Polishing



ACCUTEK AC 1300 / 1600 SPECIFICATIONS

Model	Accutek AC 1300	Accutek AC 1600
Machine Size	2240mm x 1000mm x 1520mm	2540mm x 1300mm x 1520mm
Power Supply	AC 50~60HZ, 3ph 380V/220V	AC 50~60HZ, 3ph 380V/220V
Spindle Speed	9000~12000 rpm	9000~12000 rpm
Cutting Speed	0~2000mm/min.	0~2000mm/min.
Cutting Angle	0~40°	0~40°
The Size of Dust Mouth	100mm	100mm
Compressed Air	0.6~0.8Mpa	0.6~0.8Mpa
Machine Power	2KW	3KW
Machine Weight	1500Kg	1500Kg
Cutting Depth	0~2mm	0~2mm
Cutting Mode	Spindle Feeding	Spindle Feeding
Work Area	L 1300 mm(Infinite) T 100mm	L 1600 mm(Infinite) T 110mm

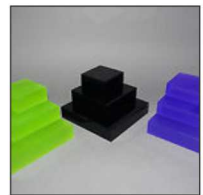
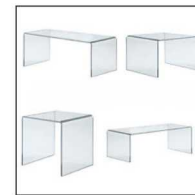
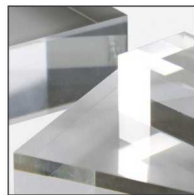
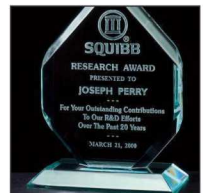
Specifications are liable to change without prior notice.



ACCUTEK AC 1360 / 1660 SPECIFICATIONS

Model	Accutek AC 1360	Accutek AC 1660
Machine Size	3470mm x 2200mm x 1470mm	4100mm x 2200mm x 1470mm
Power Supply	AC 50~60HZ, 3ph 380V/220V	AC 50~60HZ, 3ph 380V/220V
Spindle Speed	9000~12000 rpm	9000~12000 rpm
Cutting Speed	0~2000mm/min.	0~2000mm/min.
Cutting Angle	0°	0~40°
The Size of Dust Mouth	100mm	100mm

Specifications are liable to change without prior notice.



MEHTA CAD CAM SYSTEMS PVT. LTD.

HEAD OFFICE : 4 & 5, 2nd Floor, Sumel Complex,
Opp. GNFC Info Tower, Sarkhej Gandhinagar Road,
Ahmedabad-380 059. INDIA.

Contact:

Tele. : +91 - 79 - 2684 0551 / 2684 0552 / 2684 0553

Fax : +91 - 79 - 2684 0554

For Immediate Assistance, Contact on **092279 85701, 092276 78044**



mktg@mehtaindia.com



www.mehtaindia.com

DELHI | MUMBAI | CHENNAI | KOLKATA | BANGALORE | HYDERABAD | JAIPUR | RAIPUR | INDORE | LUDHIANA | CHANDIGARH | NAGPUR | PATNA | LUCKNOW | SURAT | RAJKOT | RANCHI | BHUBANESHWAR | GUWAHATI | HUBLI | VIJAYWADA | COIMBATORE | COCHIN | AGRA
OVERSEAS BRANCH : COLOMBO (SRI LANKA)