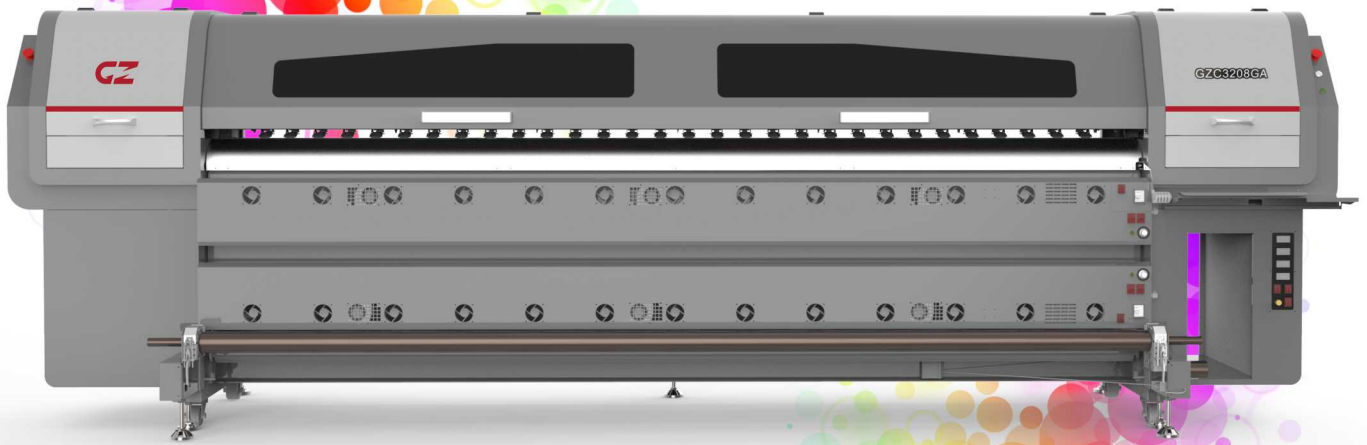


**New Introducing**

# GZC3208GA

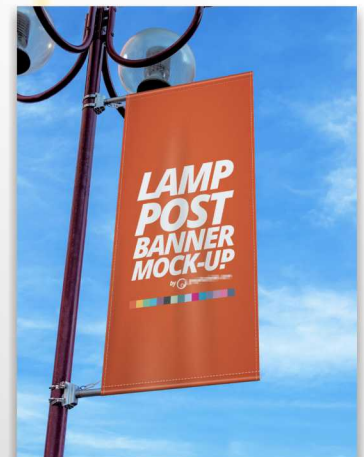
High-speed & heavy-duty eco-solvent printer equipped with **Dimatix GMA33 Print Head (5pl)**



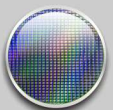
Frontlit&backlit



Vehicle wrap



Banner



Silicon MEMS



GZ VDT\*  
(Variable Dot Tech)

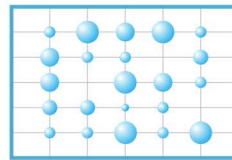


Anti Collision Unit



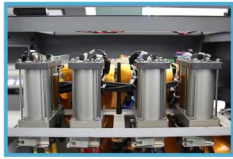
#### Dimatix GMA33 Print Head

GMA33 print head is a compact, durable, full silicon MEMS print head. 5pl dropsize, closed nozzle lines, RediJet in recirculation, high frequency and various drop make it ideal for both high speed and high quality printing.



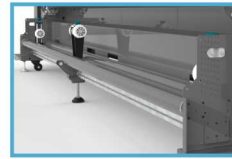
#### GZ Variable Dot Technology

GZ Variable Dot Technology delivers flawless skin tone, smoother gradient, crisp text and intricate detail without losing speed.



#### Gntek Dual Negative Pressure

Auto Capping&Wiping System with aluminum base perfectly cleans the print head nozzle face to achieve excellent printing quality and extend the print head life.



#### Dual Rolls Feeding System

Dual rolls feeding system doubles the productivity while printing short media. Taking up system with air shaft enables accurate and stable media rewinding.



#### Robust, Durable And Precise Body

Reinforced CNC aluminum beam and dual linear guides assure high speed, high resolution printing in a long run.  
\* Double linear guides than regular.



#### Panasonic A6 Servo System

Panasonic A6 servo system has high torque and low vibration, assuring more stable and accurate printing.  
\* Others use regular Chinese brand.

ITEM	SPECIFICATION																
Model	GZC 3208GA																
Print Head	8 Dimatix GMA33 Print Heads																
Technology	Piezo Variable Dot (Greyscale)																
Ink	C.M.Y.K Eco Solvent Ink																
Ink Supply System	EnTek Negative Pressure System																
Printing Width	Max. 3200 mm																
Media Type	Coated PP, Vinyl, Film, Banner...																
Feeding System	Automatic dual rolls media feeding system																
Drying System	Pre, mid, post and extended heater plus smart IR drier																
Printing Speed	<table border="0"> <tr> <td>Draft</td> <td>600x600dpi</td> <td>Low Feather</td> <td>85m<sup>2</sup>/h</td> </tr> <tr> <td>Production</td> <td>600x600dpi</td> <td>Medium Feather</td> <td>64m<sup>2</sup>/h</td> </tr> <tr> <td>High-res</td> <td>600x600dpi</td> <td>Medium Feather</td> <td>48m<sup>2</sup>/h</td> </tr> <tr> <td>Photo</td> <td>600x1200dpi</td> <td>High Feather</td> <td>28m<sup>2</sup>/h</td> </tr> </table>	Draft	600x600dpi	Low Feather	85m <sup>2</sup> /h	Production	600x600dpi	Medium Feather	64m <sup>2</sup> /h	High-res	600x600dpi	Medium Feather	48m <sup>2</sup> /h	Photo	600x1200dpi	High Feather	28m <sup>2</sup> /h
Draft	600x600dpi	Low Feather	85m <sup>2</sup> /h														
Production	600x600dpi	Medium Feather	64m <sup>2</sup> /h														
High-res	600x600dpi	Medium Feather	48m <sup>2</sup> /h														
Photo	600x1200dpi	High Feather	28m <sup>2</sup> /h														
Data Interface	External: USB 2.0 ; Internal: High-speed SCSI																
Working Environment	Temp. 23°C~29°C, Humidity: 50%~80%																
Software	PhotoPRINT +GZ Control Console																
Power	50Hz/AC 200V+ 10% 13A(printer)+ 16.73A (IR drier)																
Installed / Packdge Size	LxWxH (mm) : 4790x 1193 x 1520 / 4930 x 1150 x 1740																
G.W. / N.W.	1315kgs / 1015kgs																

Specifications are liable to change without prior notice. The printing speeds are measured in 3.2m width printing.



Authorised Distributor

#### MEHTA CAD CAM SYSTEMS PVT. LTD.

Head Office & Manufacturing Industry  
Plot No.3, Road No.1, Kathwada GIDC,  
Ahmedabad, 382 430, Gujarat, INDIA

#### Contact:

Tel.: +91-75750 09626 / 75750 09686 / 75750 09687 / 75750 09688 / 079-2970 0235

Fax.: +91-7926840554



For Immediate Assistance, Contact on **092276 78041, 092276 78044**



mktg@mehtaindia.com



www.mehtaindia.com

DELHI | MUMBAI | CHENNAI | KOLKATA | BANGALORE | HYDERABAD | JAIPUR | RAIPUR | INDORE | LUDHIANA | CHANDIGARH | PUNE | NAGPUR PATNA | LUCKNOW  
| SURAT | RAJKOT | RANCHI | BHUBANESHWAR | GUWAHATI | HUBLI | VIJAYWADA | COIMBATOR | COCHIN | AGRA | GOA