

TECHNICAL SPECIFICATION

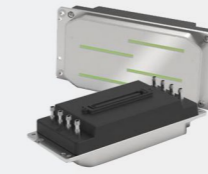
Model	RT 2513	RT 2513 FR	RT 3220
Printing Technology	Piezoelectric on-demand inkjet technology with grayscale capability		
No. of Printheads	3 EPSON T3200 U3 Print Heads (Standard) Up to 6 Print Heads (optional)		
Printable Media Size Flatbed	2500mm x 1300mm	2500mm x 1300mm	3200mm x 2000mm
Printable Media Size Roll to Roll	-	2500mm width	-
Printing Resolution	1200 dpi		
Acceptable Media Thickness	Up to 100mm		
Ink type	UV LED curable ink		
Ink Capacity	1.5 Liter Bottle		
Colours	Cyan, Magenta, Yellow, Black, White		
Configuration	(1) CMYK + White, (2) White + CMYK, (3) CMYK + White + CMYK		
Ink Curing Unit	Dual LED Lamps		
Software	Onyx RIP Center		
Interface	Highspeed USB 3.0		
Power Supply	100-110V AC / 220-240V AC, 50/60Hz		
Required Power Capacity	For Printer Operation (15A) max, + For Vacuum Platform (15A) max		
Power Consumption	Maximum 6.8kVA		
Dimensions (mm)	L 2228 x W 4310 x H 1432	L 2800 x W 4350 x H 1600	L 2776 x W 5000 x H 1366
Weight	1150kg approx	1400kg approx	1600kg approx
Working Environment	(Power on) Temperature: 21°C to 30°C (69° to 86°F)/ Humidity: 35 to 80% (Power off) Temperature: 5°C to 40°C (41° to 104°F)/ Humidity: 20 to 80%		

Specification are liable to change without prior notice. All trademarks mentioned are property of their respective owners.

RasterJet™

INTRODUCING UV FLATBED & HYBRID INKJET PRINTER ULTRA REFINED RESULTS WITH INDUSTRIAL EPSON T3200 U3 PRINTHEAD

Equipped with
EPSON
EXCEED YOUR VISION Printheads



High Printing Quality with

- Easy Integration.
- Accurate Precision Core Chip Create Outstanding Print Quality.
- Integrated 4color Make Higher Print Quality With Lower Investment Of Integration.

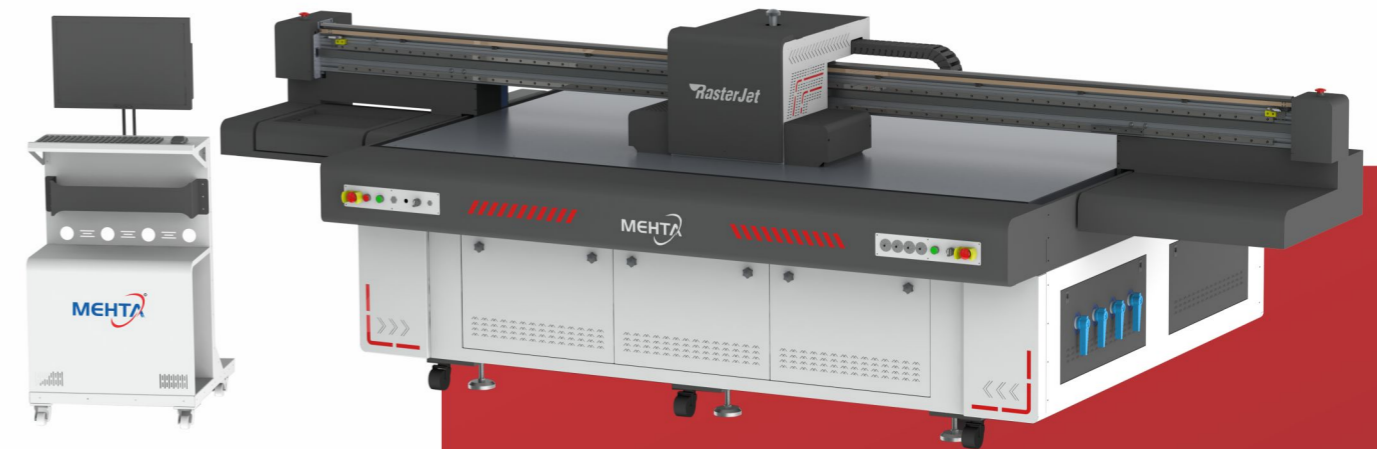
Jetting Performance
5-15pl with 24kHz

Internal Heater
High viscosity Ink is applicable

Industrial Design
Metal Plate, Accurate Alignment Hole

OUR OTHER RANGE OF PRODUCTS

 UV Flatbed Printer With Ricoh Gen5 & Gen6 Printheads RASTERJET	 UV Flatbed Printer With Kyocera Printheads RASTERJET	 UV Roll to Roll Printer with Seiko 1024HG, 13pl Printhead BLAZE	 UV Roll to Roll Printer with Kyocera Printhead ENZO-32
 Solvent Printer with 6 Seiko Printhead Speed : 3540 sq.ft./hr. CROWN	 Solvent Printer with 2 Seiko Printhead Speed : 2360 sq.ft./hr. PRINCE	 ECO Solvent Printer with Epson i3200 Printhead, Speed : 352 sq.ft./hr. BRUNO	 ECO Solvent Printer with Epson i3200 Printhead, Speed : 352 sq.ft./hr. UNO



RT 2513 / 2513 FR are equipped with internationally acclaimed print control system, highly efficient setting for repetitive printing, accurate positioning function makes the printer the best in its class. RasterJet RT 2513FR is a professional wide format inkjet UV Flatbed printer with roll to roll printing facility. It can print rigid media like wood, glass, ACP, Acrylic etc. and Flexible Media like Flex, Vinyl, Resin, Leather etc.

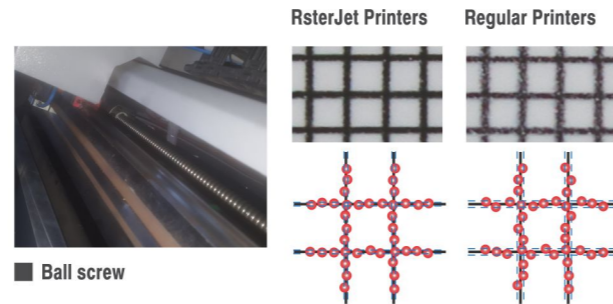


Features

- High speed UV Printer than any regular UV Printers, thanks to its electronics and AC Servo Motors.
- Z-Axis Movement up to 100mm (150mm optional), One can print on 100mm thickness media. (for all RT 2513)
- RasterJet UV Printers are equipped with latest silent LM guide.
- All AC Servo motors and drives for long life, trouble and maintenance free operation.
- Smart printing technology enable to higher productivity.
- Automatic media height detection system.
- Anti-static bar for neutralizing static charge on the substrate being printed.
- Anti crush system for preventing printheads while collision.
- 4 zone vacuum system.

Mechanical Structure Achieves High-precision Printing

To reduce printer unit vibration, the print table moves during printing instead of the Y-bar, In addition, to achieve higher position accuracy, two ball screws are installed on both sides of the table to assist with its movement. RasterJet UV flatbed printers offers high performance printing that satisfies the position accuracy necessary for additional printing on preprinted surfaces. Furthermore, fine lines, edges, and small texts are clearly represented. RasterJet UV flatbed printers are the best digital on demand printing solution for the screen printing industry.



Rasterjet's Print Technology For Achieving High Quality Printing

RasterJet Optimizations Level System

Level 1: Remove the band even in bi-direction mode

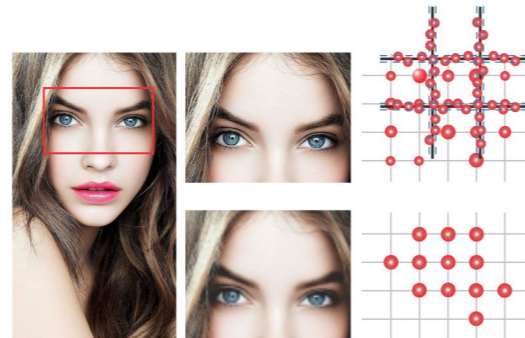
Level 2: Using the optimizations one cannot see the effect on printing even if some nozzles are clogged.

Level 3: Intelligent Feather Printing Technology, The unique intelligent feather printing technology can improve the curable reflective stripes which occurred in the printing process, so that the printing quality can reach the ideal state.



Variable Dot Printing

Optimum droplet sizes are automatically varies for each print mode. Moreover Rasterjet UV flatbed printers can separately control droplet size for process color (CMYK) and spot color. This capability is useful for simultaneous double-layer printing. Small droplet are used for color printing to present a delicate finish, and large droplet are used for white-base-layer printing to obtain high opacity.



PRINTING SPEED RT 2513 / RT 2513 FR with EPSON T3200 U3 Printhead

Printing Pass	Resolution	Print Speed sq.ft/hr
4 Pass	720 x 1200 dpi	275 sq.ft/hr
6 Pass	720 x 1800 dpi	210 sq.ft/hr

PRINTING SPEED RT 3220 / RT 3220 FR with EPSON T3200 U3 Printhead

Printing Pass	Resolution	Print Speed sq.ft/hr
4 Pass	720 x 1200 dpi	285 sq.ft/hr
6 Pass	720 x 1800 dpi	220 sq.ft/hr

PRINTING SPEED OF RJ-II 1016E with Epson T3200 U1 Printhead

Printing Pass	Resolution	Print Speed sq.ft/hr
Pass 4	720 x 1200 dpi	72 sq.ft/hr
Pass 6	720 x 1800 dpi	60 sq.ft/hr

PRINTING SPEED OF EMICO 9060 with Epson T3200 U1 Printhead

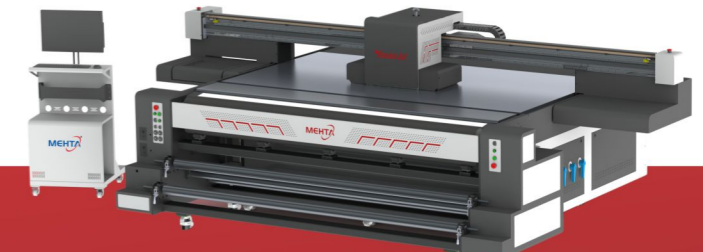
Printing Pass	Resolution	Print Speed Minute/Sheet
Pass 4	720 x 1200 dpi	4.2 Min./Sheet
Pass 6	720 x 1800 dpi	6.3 Min./Sheet

RT 2513
INKJET UV FLATBED PRINTER
Working Area : 2500 mm x 1300 mm



Powered by EPSON T3200 U3 Printhead

RT 2513 FR
HYBRID INKJET UV PRINTER
Working Area : For Flatbed Media: 2500 mm x 1300 mm
For Roll to Roll Media: 2500 mm Max. Width



Powered by EPSON T3200 U3 Printhead

RT 3220
INKJET UV FLATBED PRINTER
Working Area : 3200 mm x 2000 mm



Powered by EPSON T3200 U3 Printhead

RT 3220 FR
HYBRID INKJET UV PRINTER
Working Area : For Flatbed Media: 3200 mm x 2000 mm
For Roll to Roll Media: 3200 mm Max. Width



Powered by EPSON T3200 U3 Printhead

EMICO 9060
INKJET UV FLATBED PRINTER
Working Area : 900 mm x 600 mm



Powered by EPSON I3200 U1 Printhead

RJ-II 1016E
INKJET UV FLATBED PRINTER
Working Area : 1000 mm x 1600 mm



Powered by EPSON I3200 U1 Printhead

